

**Integration Designer** *simplicity*  
Saving you time, money and effort.

Microsoft Business Solutions

**Integration Designer**  
Analytics

# Microsoft® Business Solutions for Analytics–Integration Designer

## Build a business around the demand for better financial reporting.

Financial professionals in mid-sized companies continue to struggle with their financial reporting processes. They often describe it as being “out of control.” Unless they use Microsoft® Business Solutions for Analytics–FRx®. More than 115,000 companies around the world use FRx to gain complete control of their financial reporting process. And now you can offer this widely adopted solution to your customers using Microsoft® Business Solutions for Analytics–Integration Designer.

Integration Designer lets you quickly and easily create an FRx integration to virtually any general ledger (GL) system. It’s an easy-to-use application that helps save you time and reduces the technical learning curve associated with other product integrations you may have experienced in the past. Integration Designer also helps open up a new business opportunity, and provides you with a potentially profitable growth path.

### Introducing...Microsoft® Business Solutions for Analytics–FRx® for virtually any GL.

Integration Designer helps reduce the time, effort and cost involved in building integrations to FRx. Now it’s easy for you to make FRx work with virtually any general ledger platform. Integration Designer gives you the opportunity to grow your revenues by licensing FRx to organizations that need a dependable financial reporting solution.

Integration Designer includes two easy-to-use components - one for you, and one for your customer. With drag-and-drop simplicity, you use Data Integrator to automate the time-consuming process of mapping data from a general ledger to the FRx FDM - a Microsoft SQL Server™-based financial data mart (FDM) optimized for use with FRx. Your customers can use Data Refresher for reliable and timely movement of information from their general ledger into the FRx FDM where they use FRx to build financial reports.

Integration Designer can help generate substantial revenue for you and help build a profitable, long-term relationship with your customers; they’ll love FRx! Help reduce the cost of development, testing and support and improve your customers’ experience and satisfaction.

## Make Money.

- *Leverage one integration across the same GL platform*
- *Add new services revenue*

Visit [www.frxsoftware.com/analyticsprovider](http://www.frxsoftware.com/analyticsprovider) to learn more about how FRx Software can help you build a profitable financial analytics business.

### Reduce weeks of work into just a few days.

Creating an integration from scratch is time and labor intensive. Integration Designer can help you shorten the process from weeks to days. In order to use Data Integrator, you’ll need basic technical skills - an understanding of the GL database, Microsoft SQL Server 2000 and a scripting language. Integration Designer reduces the level of technical expertise required by automating most of the integration processes - including script creation.

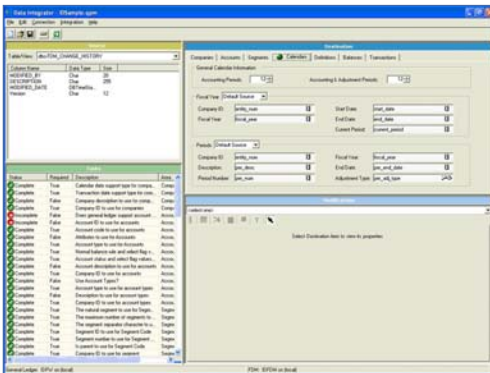
Data Integrator has a user-friendly interface that provides quick drag-and-drop mapping of data from general ledgers that allow schema discovery. It helps you rapidly map, transform and load general ledger data into the FRx FDM. Task lists keep track of where you are in the process and guide you to open items that require an answer. Once you have mapped the initial integration, one button execution creates import scripts that are used to load the data from the GL into the FRx FDM. All import scripts are created by a tool rather than manual coding, which saves you time during the integration process.

### Simply easier to use

Delivering a data integration solution to your customer is easier using Integration Designer. Data Refresher eliminates the need for you to develop a user interface for your customers. They’ll appreciate its simplicity. Data Refresher is easy to use, and provides complete control over refreshing up-to-the minute data, as they need it. Ad-hoc updating is one-button-simple for your customer, and initial setup and updating of automated scheduling is wizard-driven.

Because your customers use only Data Refresher, and the standard scripts created for their GL, there is no starting over from scratch with each customer.

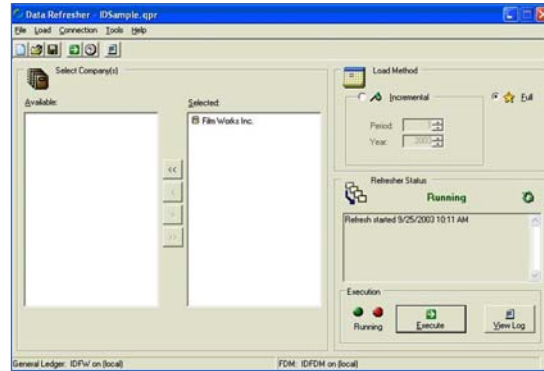
## Data Integrator



Your tool for building the integration from your customer's GL to the FRx FDM is Data Integrator, which:

- Uses an easy-to-understand interface and drag-and-drop simplicity to reduce time and efforts in mapping data.
- Reveals GL tables and fields for mapping into the FRx FDM to simplify the process and give you a place to start.
- Allows you to transform data from the GL to the FRx FDM-required format to decrease manually programming when data types or formats need to be changed.
- Allows the user to confirm that the data selected is what is intended, with built-in previews of the GL data to ensure that the correct data is mapped.
- Uses a Task List to show all required and non-required, completed and non-completed fields to keep track of where you are in the process.
- Enables additional transformations and customizations of source GL data when special situations arise using the tool's Data Editor capability.
- Creates import scripts, in the background, with one-click simplicity to reduce manual programming.

## Data Refresher



To update the FRx FDM, your customer uses Data Refresher, which:

- Performs full or incremental period data updates to manage what GL data should be loaded.
- Updates the FRx FDM either automatically on a schedule, or manually, with one-button simplicity to provide control over when data is loaded.
- Exercises security provisions based on an individual's access to specific GL companies to help ensure that only authorized users can load data.

Reduce the time, effort and cost involved in building integrations to FRx.



## About FRx Software

FRx Software, a Microsoft company and a part of Microsoft Business Solutions, is a leading provider of financial analytic applications that work with virtually any general ledger to give you the control you need to be more effective. Our product suite, Microsoft® Business Solutions for Analytics–FRx® and Microsoft® Business Solutions for Analytics–Forecaster, can improve productivity by helping you efficiently manage your organization’s financial reporting and budgeting processes. FRx is used by more than 115,000 sites worldwide to gain immediate control of the financial reporting process. Forecaster is a browser-based budgeting and planning application that makes it easy for organizations to quickly realize the benefits of budgeting. Used together or separately, FRx and Forecaster provide the financial visibility you need to actively manage your business and take decisive action. Our applications are widely available through a worldwide channel of Integration Partners and Analytics Solution Providers, who can help you quickly implement these solutions and start saving you time and money throughout the year.

[www.frxsoftware.com](http://www.frxsoftware.com)

**United States** +1 303.741.8000 | 800.379.8733  
**Australia and Asia-Pacific** +61 (2) 9870 2531  
**EMEA** +44 (118) 909 3759

The information contained in this document represents the current view of Microsoft Corporation on the issues discussed as of the date of publication. Because Microsoft must respond to changing market conditions, it should not be interpreted to be a commitment on the part of Microsoft, and Microsoft cannot guarantee the accuracy of any information presented after the date of publication.

This document is for informational purposes only. MICROSOFT MAKES NO WARRANTIES, EXPRESS, IMPLIED OR STATUTORY, AS TO THE INFORMATION IN THIS DOCUMENT.

© 2004 FRx Software Corporation. All rights reserved. Microsoft and FRx are either registered trademarks or trademarks of Microsoft Corporation or FRx Software Corporation or their affiliates in the United States and/or other countries. All other registered trademarks and trademarks are property of their respective owners. FRx Software Corporation is a subsidiary of Microsoft Corporation.