



ProClarity Analytics Server

The central access hub for data analysis and reporting

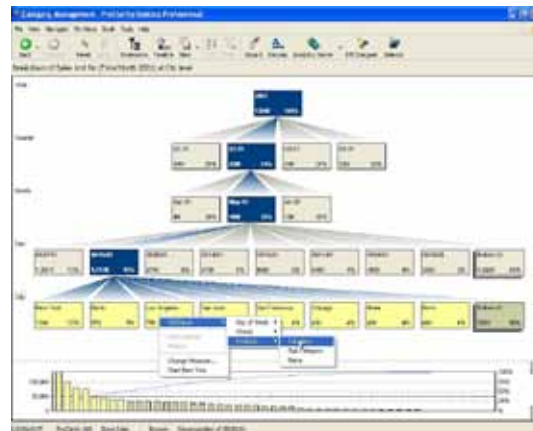
The ProClarity Analytics Server is a middle-tier server that is the powerful central component of the ProClarity business intelligence solution. Analytics Server is the hub that enables simple data access for end users. With Analytics Server, end users can securely get to data on their own and perform ad-hoc analysis and reporting without having to burden IT.

business analysts and powers users to decision makers with novice analytic skills. The clients can also be adapted to your technical requirements including thin extranet deployments.

The end-user experience is designed to simplify how individuals receive and interact with data. Intuitive navigation, powerful analysis, and advanced data visualizations like the patented ProClarity Decomposition Tree improve the ability of end users to investigate, understand and take action on business data.

Understand Why

ProClarity's advanced visualizations, like the patented Decomposition Tree, allow users to easily perform root-cause analysis.



Analytics Server in Action

Analytics Server maintains communication between the ProClarity client applications and the OLAP provider, Microsoft SQL Server Analysis Services. The Analytics Server makes interacting with the data simple for end users, as they can conduct ad-hoc queries with simple point-and-click navigation.

Flexible Data Access

End users access Analytics Server through numerous simple-to-use client tools, including thin Web clients, rich Web and desktop clients, dashboards, portals, reports and publications accessed via the Internet, intranet, or extranet.

Microsoft Data Access Components (MDAC) and Microsoft PivotTable Services (PTS) enable communication with Microsoft SQL Server Analysis Services (2000 and 2005). ProClarity Analytics Server centrally manages security administration, scaling and caching. It comes with a repository, the Analytics Server database, that facilitates

End-user clients are adapted to user-specific needs—from technically savvy



Technical Requirements:

Hardware

- Pentium-class processor
- Minimum 512 MB RAM
- Recommended: Server-class processor 4 GB RAM

Operating Systems:

- Microsoft Windows 2000 Server and Advanced Server, with Service Pack 4 or Microsoft Windows Server 2003 (Standard, Web, and Enterprise Editions)
- Support for English (US), French, German, and Spanish Operating Systems

Additional Software:

- Microsoft Internet Information Services (IIS)
- IIS 5.0.2195.6620 (min)
- IIS 6.0 (recommended)
- Microsoft SQL Server 2000 Analysis Services, with Service Pack 4
- Microsoft SQL Server 2005 Analysis Services
- Microsoft .NET Framework 2.0 redistributable

Browser:

- Internet Explorer 6.0

<http://www.nexdimension.net>
info@nexdimension.net

Americas
770.475.1575

Europe
+31 (73) 681.0800

the secure storage, exchange and management of business logic, metadata and analytic data views. The Analytics Server delivers data views to end-user clients in the form of Briefing Books.

Scalability

ProClarity Analytics Server supports deployments ranging from small implementations to enterprise solutions with widely dispersed end users. The Analytics Server architecture is specifically designed to support a large number of users; it operates well in a clustered environment enabling simultaneous scaling to thousands of users.

High-speed caching to the Analytics Server accelerates performance. The caching engine ensures the previously requested queries are served up from a middle-tier cache, saving a round trip from the Analytics Server to the OLAP server—and it clears the cache as OLAP data is refreshed. Cached data is delivered near real time with 100% accuracy.

Security

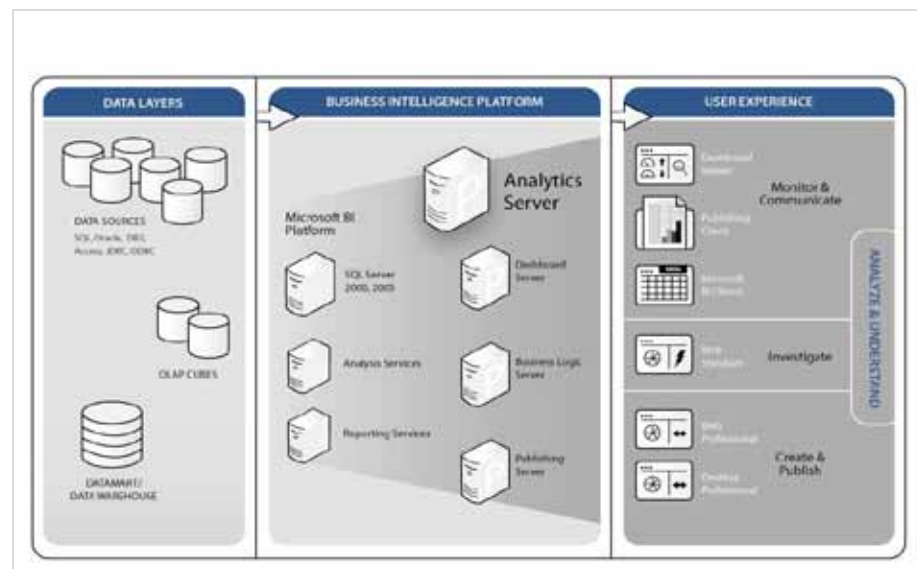
The Analytics Server security model provides a powerful and adaptable

structure for controlling access to Analytics Server and any referenced Microsoft Analysis Services servers. It can adapt to virtually any security model available, including Active Directory, various types of LDAP and Single Sign-On (SSO). The most popular security model is role based which leverages existing Windows NT user information, and as a result, it is easily integrated into Windows environments. Analytics Server security can be used in combination with Analysis Services (OLAP) security for cube-level security.

Interface to Insight

Analytics Server simplifies how end users receive and gain insight into data through simple-to-understand interfaces, powerful, patented data visualizations and adaptable deployment options.

All of these features are designed to help people understand large quantities of data faster, deliver information to decision makers in formats that they can easily use, and support diverse technical requirements, making ProClarity Analytics 6 a robust business intelligence solution.



Copyright ProClarity Corporation 2005. All Rights Reserved. ProClarity is a registered trademark of ProClarity Corporation. U.S. Patent No. 6,167,396. The names of actual companies and products mentioned herein may be the trademarks of their respective owners. [v.2.0705]